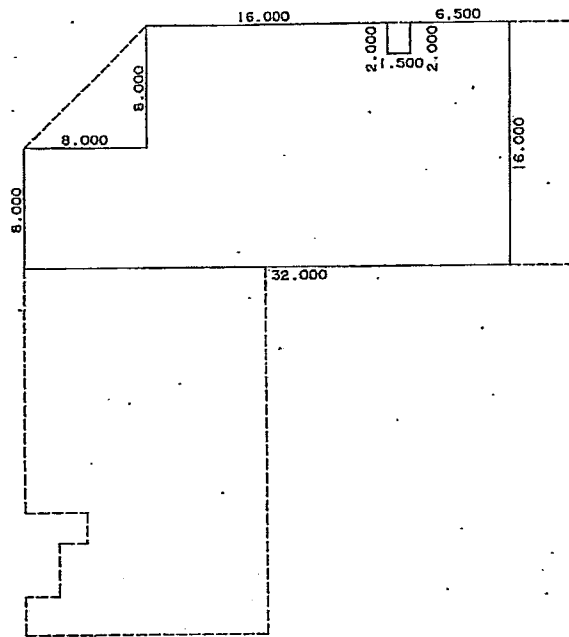


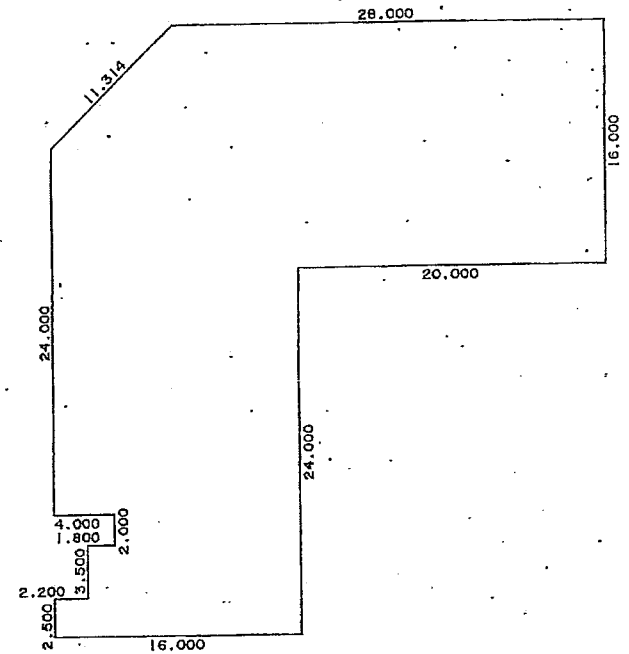
(主) 2 階



求積表

2.000	X	16.000	=	32.000000
2.000	X	6.500	=	13.000000
6.000	X	24.000	=	144.000000
8.000	X	32.000	=	256.000000
合 計				445.000000
床面積				445.00 m ²

(主) 1 階



求積表

(28.000 + 36.000)	X	8.000	X	1/2	=	256.000000
8.000	X	36.000			=	288.000000
16.000	X	16.000			=	256.000000
2.000	X	12.000			=	24.000000
3.500	X	13.800			=	48.300000
2.500	X	16.000			=	40.000000
合 計						912.300000
床面積						912.30 m ²